

What is Industrial Construction?

Industrial construction is a specialized type of construction. Manufacturing plants and warehouses often mix horizontal and vertical construction methods, both of which RP Constructors performs. Industrial construction also involves designing, installing and maintaining these structures. RP Constructors combines our experience and expertise to handle all types of industrial construction projects from conception to completion. With an in-house engineering firm, RP Constructors can take on industrial projects without the need to hire outside design and survey help. A streamlined system means projects go up faster and on budget.

Our Unique Approach

RP Constructors understands what contractors go through to complete a project by deadline. With a foundation in heavy civil construction, we have first-hand knowledge of how projects should be built and how long they will take. Our business acumen allows us to design and survey projects with the contractor in mind. No other firm can match this level of service.



Our Services

RP Constructors specializes in designing, building and maintaining wastewater treatment and food processing facilities. We have the experience and expertise to self-perform the work or make improvements on an existing industrial construction project.

- Grading and ground improvement(shoring)
- Underground utilities
- Concrete
- Water/wastewater
- Electrical (underground)
- Gas
- Process equipment

RP Constructors' professional services complete our service model by providing engineering and surveying for each industrial project. This approach gives RP Constructors the ability to outmatch any competitor, no matter if the client is municipal, commercial, or private.

How We Save You Money

Not only does RP Constructors understand the complexity of industrial construction, but as engineers, we know how to complete the project ahead of schedule and on budget. Our construction teams have the advantage of working with an engineering firm that designs projects that are easier to build. Smart, streamlined plans allow contractors to accelerate their schedules and save money. When others say it can't be done, we say it can.

Case in point; an industrial food industry came to us with issues on their wastewater treatment system and the need for a new pretreatment facility. Another engineering firm had developed an extensive and expensive plan to solve the problem. RP Constructors was able to design a simpler solution that saved the client more than 40%. Plus, the project was completed more than a year ahead of the previously proposed schedules. Not only did this meet the client's budget and timeline goals, but it was completed with quality and safety in mind. Satisfaction is always paramount.

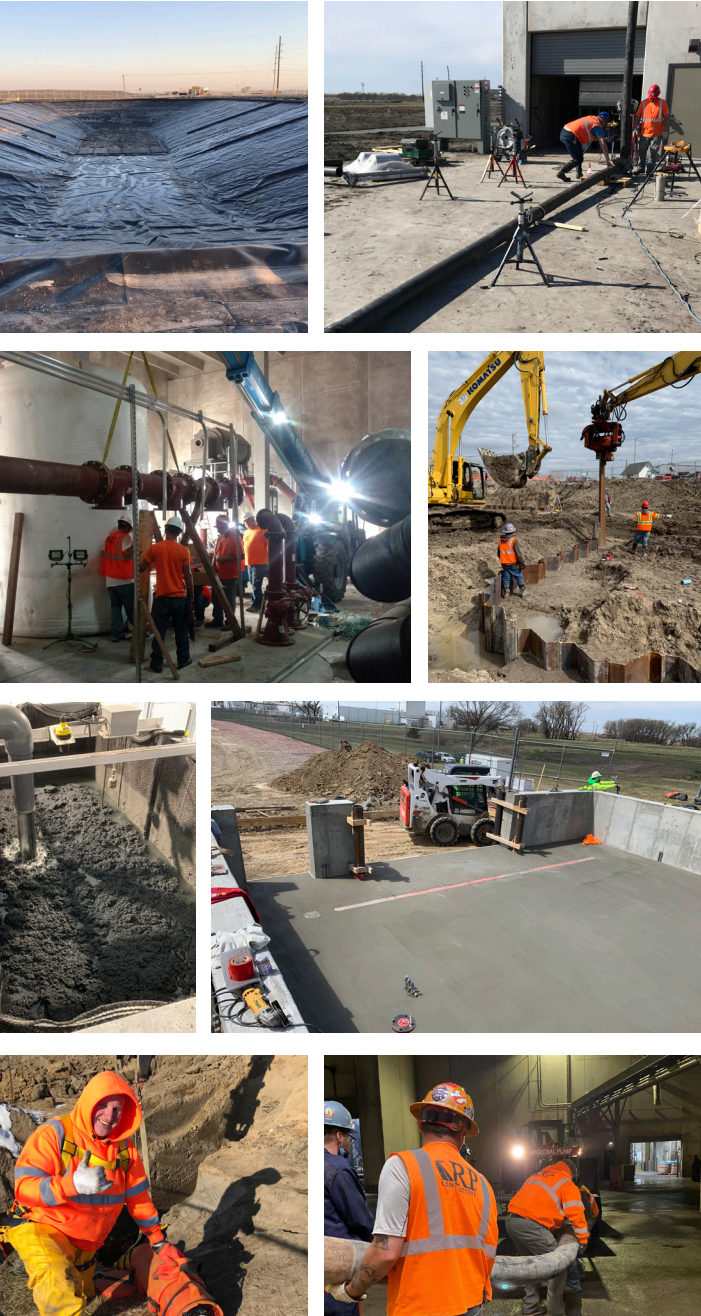
"We'll be able to continue for the next 10, 20, 30 years and get even better at it."

RYAN CALLAGHAN, CEO



Find Your Solution

Call or email us to learn more about how our design and building processes work together to complete industrial construction projects on time, on budget, and exactly to specifications.



RP Constructors, LLC

Address:

1270 South Derby Lane
North Sioux City, SD 57049

Phone: (712) 222-1452

Email: info@rpconstructors.com

Website: rpconstructors.com

Follow us on Social: [@rpconstructorsllc](https://www.instagram.com/rpconstructorsllc)



Industrial Construction

